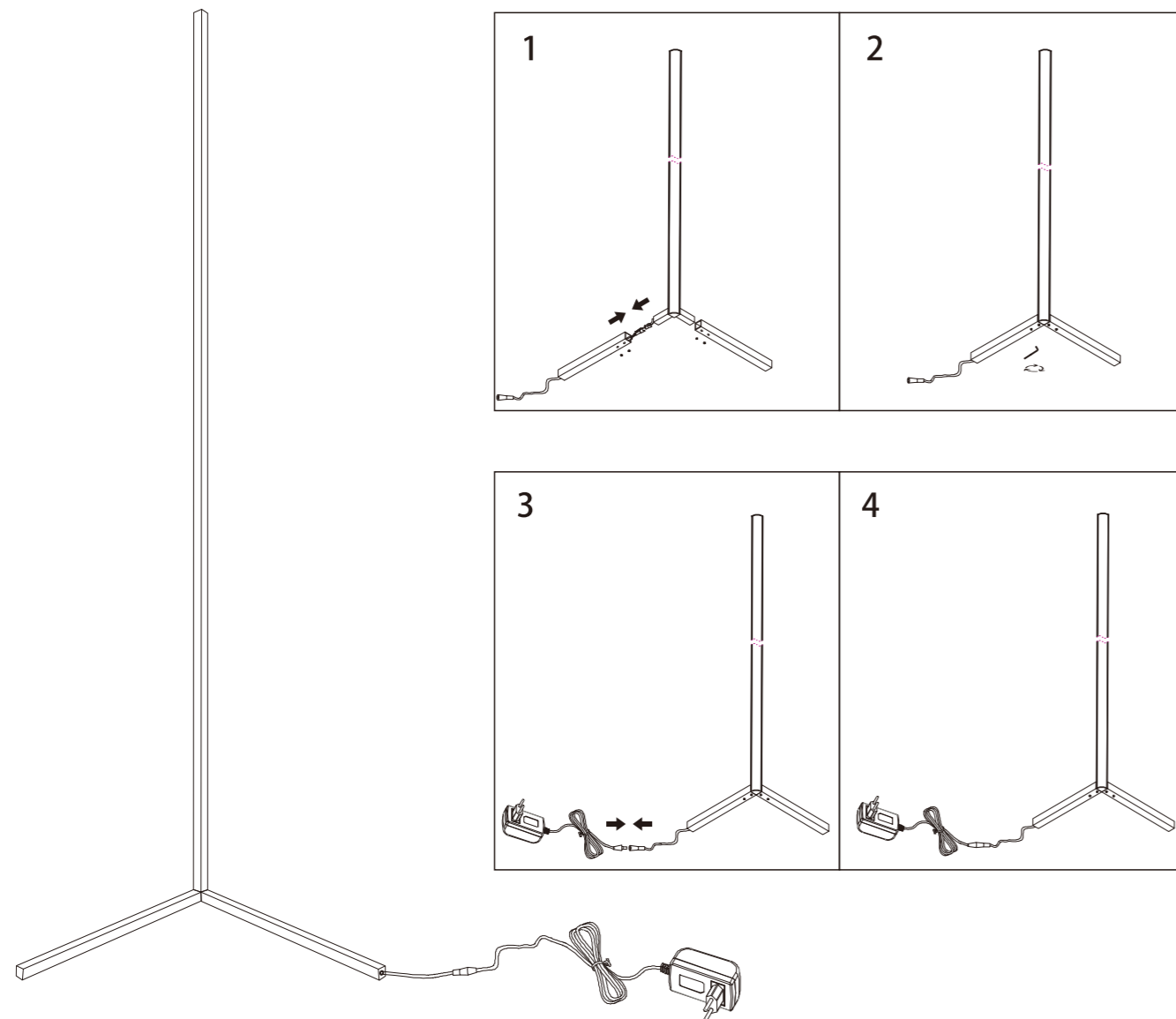


# AZzardo® INSTALLATION

Product Name: JOHNNY DIGITAL LED RGB + REMOTE CONTROL

Model: AZ4754/AZ4755



## Installation Method:

1. Connect the iron base to LED bar.
2. Use the Wrench to fix the iron base.
3. Connecting the power plug.
4. Begin using RGB lamp.

## Attention Notes For Installation:

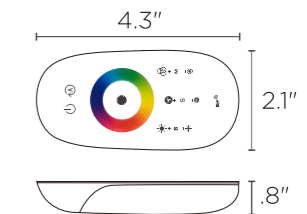
1. Do not use the power supply beyond the specified range(100-240V,50Hz).
2. Should avoid scratching the surface and wires of the lamp during installation.
3. Do not install the lamp outdoors.
4. The lamp should not be close to corrosive chemical objects or gases.It should not be washed with water.It can only be wiped with a clean soft cloth.

# AZzardo® RF Remote Control

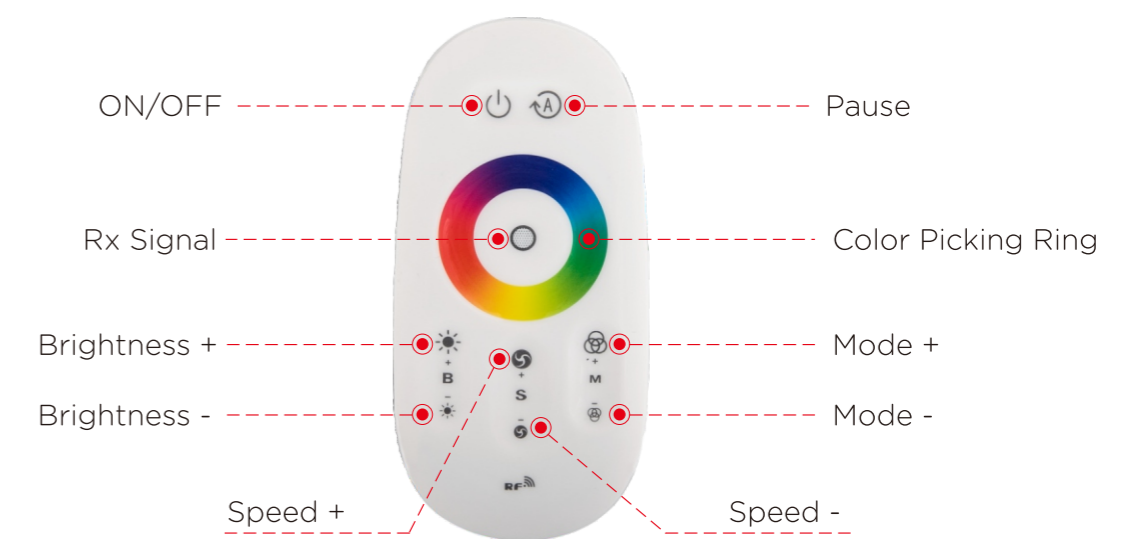
## Product Parameters


Receiver Input : DC5-24V  
Output : Digital Signal  
Distance : 20m  
Remote Power Supply : 2\*AAA battery

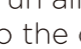
## Product Size





## Operating Schematic



Auto running program:Click any color in the color picker ring.And then press  . That will start to run all the dynamic mode.

Pair the remote to the controller:At the same time,de-press the 2 buttons of  and M-,Once the white light flashing 3 times, the process is successfully.

De-pair:At the same time,de-press the 2 buttons of  add S-,Once the white light flashing 3 times,the process is successfully.

Align the color of lighting:At the same time,de-press the 2 buttons of  and B-,to alignthe lighting color.

## Cautions

1. Do not expose the components of this product direct moisture.
2. Do not expose the components of this product to excessively high temperatures.
3. Please keep out of reach of children.
4. Please consult your owner's manual and/or local dealer if issues arise.
5. Do not mix alkaline,standard and rechargeable batteries.
6. Do not mix old and new batteries.
7. Exhausted batteries should be removed immediately from the remote.
8. The supply terminals are not to be short-circuited.